









JANED





JANED 140 Tirette/Cord SG

Finitions
Finishes

 Laiton satiné SB Satin brass	 Graphite satiné SG Satin graphite	 Nickel satiné SN Satin nickel	 Cuivre satiné SC Satin copper
 Laiton poli PB Polished brass	 Graphite poli PG Polished graphite	 Nickel poli PN Polished nickel	 Cuivre poli PC Polished copper

Matériaux
Material

Laiton massif Solid Brass	Verre Opale Triplex Opal triplex glass	Janed 140 Cable Câble textile noir (longueur ≈ 2,5m) Black textile cable (length ≈ 98")
------------------------------	---	---

Source
Lamping

Janed 120 & 140 Simple G9 Led 5W max . non fournie G9 Led 5W max . not included	Variable * Dimmable*
Janed 140 Tirette/Cord G9 Led 5W max . non fournie G9 Led 5W max . not included	Interrupteur on/off On/off switch
Janed 140 Cable G9 Led 5W max . non fournie G9 Led 5W max . not included	Interrupteur on/off On/off switch

Designer

Emilie Cathelineau

* Les luminaires variables nécessitent l'utilisation d'ampoules compatibles avec la variation.
All dimmable light fixtures require the use of compatible bulbs.

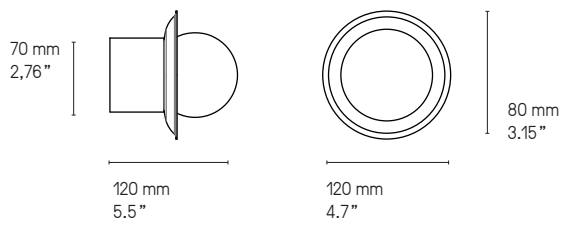


JANED 140 simple SB



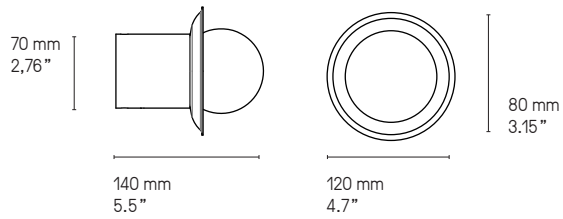
JANED 140 simple SG /SB

JANED 120 simple

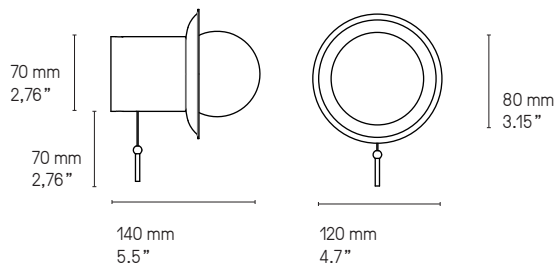


JANED 140 simple SN

JANED 140 simple

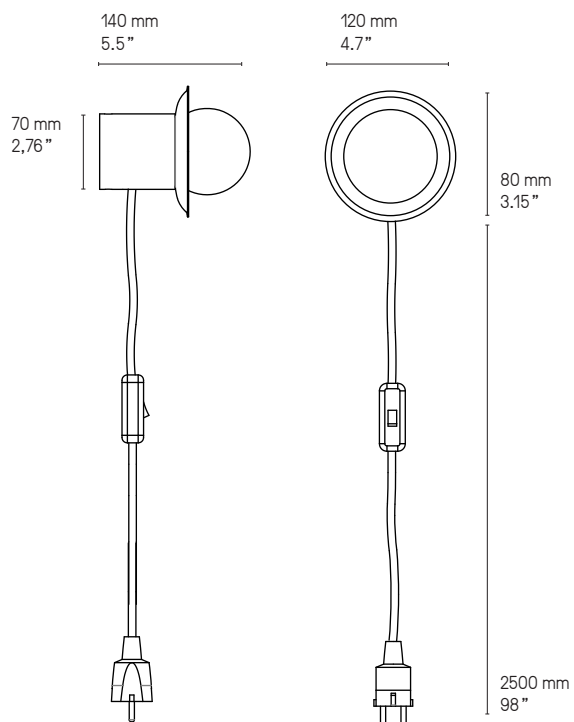


JANED 140 Tirette/Cord



JANED 140 Tirette/Cord SG

JANED 140 Cable



Longueurs sur mesure possibles.
Custom dimensions available upon request.



JANED 140 Cable PN

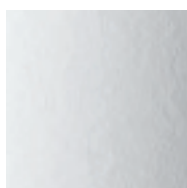
NUANCIER – FINISH OPTIONS



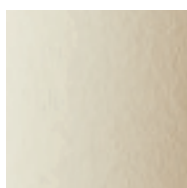
LAITON – BRASS

- | | |
|-------------------------------------|---|
| ① Laiton satiné
SB Satin brass | ② Graphite satiné
SG Satin graphite |
| ③ Nickel satiné
SN Satin nickel | ④ Cuivre satiné
SC Satin copper |
| ⑤ Laiton poli
PB Polished brass | ⑥ Graphite poli
PG Polished graphite |
| ⑦ Nickel poli
PN Polished nickel | ⑧ Cuivre poli
PC Polished copper |

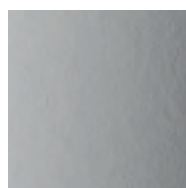
ABAT-JOURS – LAMPSHADES



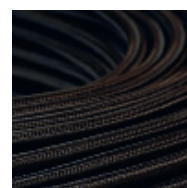
Drop Paper® 100



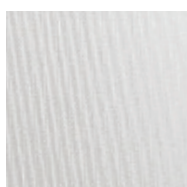
Drop Paper® 101



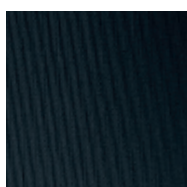
Drop Paper® 103



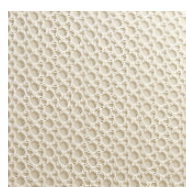
Tissu noir
Black textile



Chinette blanche
White chinette



Chinette noire
Black chinette



Duke
Duke

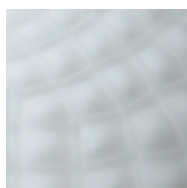


Tissu or
Gold textile

VERRERIE – GLASS



Opale
Opal



Opale et écaille
Opal and patterned



Claire et écaille
Clear and patterned

CONSEILS TECHNIQUES

Les caractéristiques techniques mentionnées dans ce document sont données à titre indicatif et sont susceptibles de subir des modifications. Ceci est lié à l'évolution rapide de la technologie LED.

Les dimensions sont approximatives et peuvent varier légèrement.

AMPOULES

Il est impératif de respecter les types et les puissances maximales préconisées sous peine de détériorer le luminaire. En cas de non-respect, la garantie ne pourra s'appliquer.

CONSEIL D'ENTRETIEN

Essuyage avec un chiffon doux, sans produits d'entretien. Nos produits étant vernis afin d'assurer la longévité du luminaire, il ne faut en aucun cas utiliser de produits détergents ou de solvants.

La société se réserve le droit de modifier, sans préavis, les caractéristiques de ses produits.

TECHNICAL ADVICE

The technical characteristics provided in this document are for information purposes only and are subject to change, due to permanent evolution of LED technology.

All dimensions are approximate and may vary slightly.

LIGHT BULBS

Use only the type of light bulb and maximum wattage shown otherwise you may damage the light fitting. Failure to use the correct light bulb and wattage will affect the warranty.

CARE INSTRUCTIONS

Wipe with a soft cloth –do not use any cleaning products. All our light fittings are lacquered to ensure the longevity of the product– under no circumstances use detergents or solvents.

The company reserves the right to modify its products at any time without notice.

CVL LUMINAIRES

79 ROUTE DE LA CHEVALLERIE – 49770 LONGUENÉE-EN-ANJOU – FRANCE

TEL. +33 (0) 2 41 32 67 54 – FAX +33 (0) 2 41 32 76 62

EMAIL : CONTACT@CVL-LUMINAIRES.FR

WWW.CVL-LUMINAIRES.FR

Logo, brand identity and art direction: P00L Layout, print process supervision: deuxpointdeux Photo shoots, 3D integrations: Garnier Studios

Technical drawings: Émilie Cathelineau